

GAIL CATLIN
DIASEC COLLECTION

JOHN CATLIN
GRAPHIC DESIGN ARTIST



BLUE OWL

CATALOGUE NUMBER : A15

L - 1000 x 770mm • M - 800 x 617mm • S - 600 x 463mm

*Alternative sizes available on request



BIRDS IN FLIGHT
CATALOGUE NUMBER : M53

L - 1200 x 1200mm • M - 1000 x 1000mm • S - 800 x 800mm

*Alternative sizes available on request



EAGLE

CATALOGUE NUMBER : A20

L - 1000 x 670mm • M - 800 x 536mm • S - 600 x 400mm

*Alternative sizes available on request



OWL

CATALOGUE NUMBER : A38

L - 1000 x 670mm • M - 800 x 536mm • S - 600 x 400mm

*Alternative sizes available on request



GOLD STORK

CATALOGUE NUMBER : M49

L - 1900 x 878mm • M - 1700 x 786mm • S - 1500 x 694mm • XS - 1200 x 555mm

*Alternative sizes available on request



RED HEADED STORK

CATALOGUE NUMBER : M48

L - 1900 x 878mm • M - 1700 x 786mm • S - 1500 x 694mm • XS - 1200 x 555mm

*Alternative sizes available on request

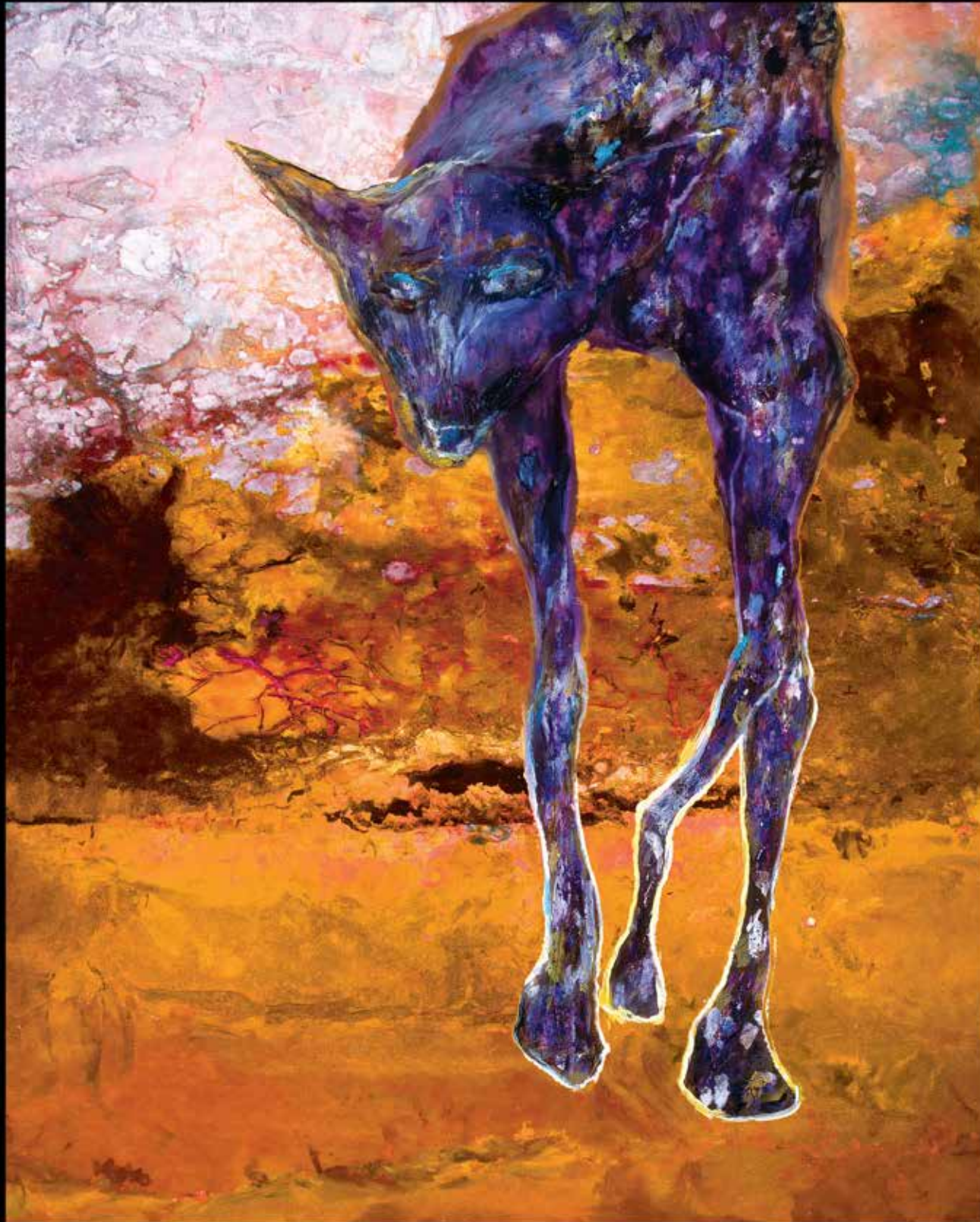


BIRDS IN FLIGHT - COBALT BLUE

CATALOGUE NUMBER : M60

L - 1200 x 1200mm • M - 1000 x 1000mm • S - 800 x 800mm

*Alternative sizes available on request



DESERT WILD DOG
CATALOGUE NUMBER : M33

L - 1200 x 960mm • M - 1000 x 800mm • S - 800 x 639mm

*Alternative sizes available on request



BLUE NIGHT WILD DOG

CATALOGUE NUMBER : M31

L - 1200 x 1187mm • M - 1000 x 990mm • S - 800 x 792mm

*Alternative sizes available on request

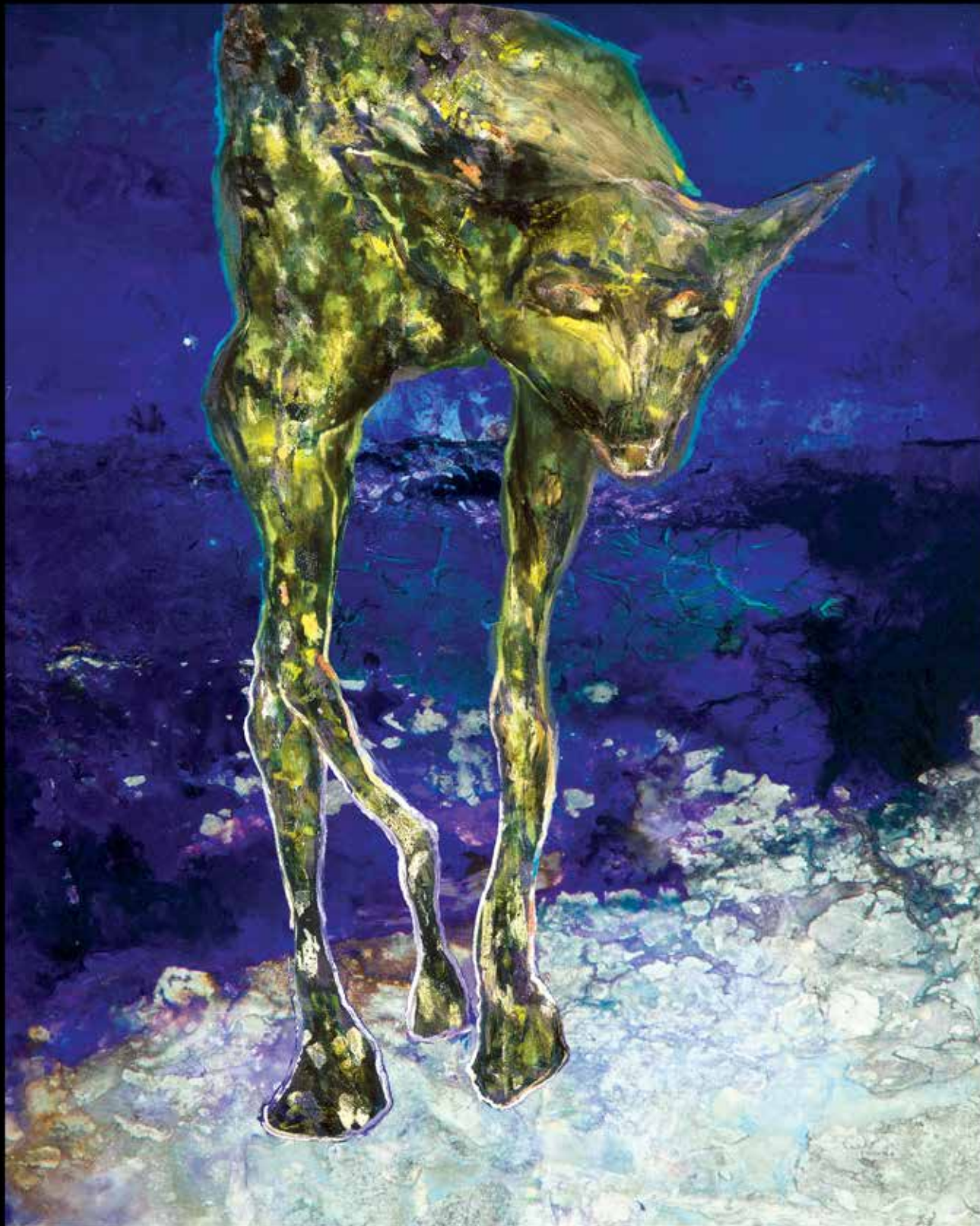


GOLDEN NIGHT WILD DOG

CATALOGUE NUMBER : M30

L - 1200 x 1000mm • M - 1000 x 833mm • S - 800 x 666mm

*Alternative sizes available on request

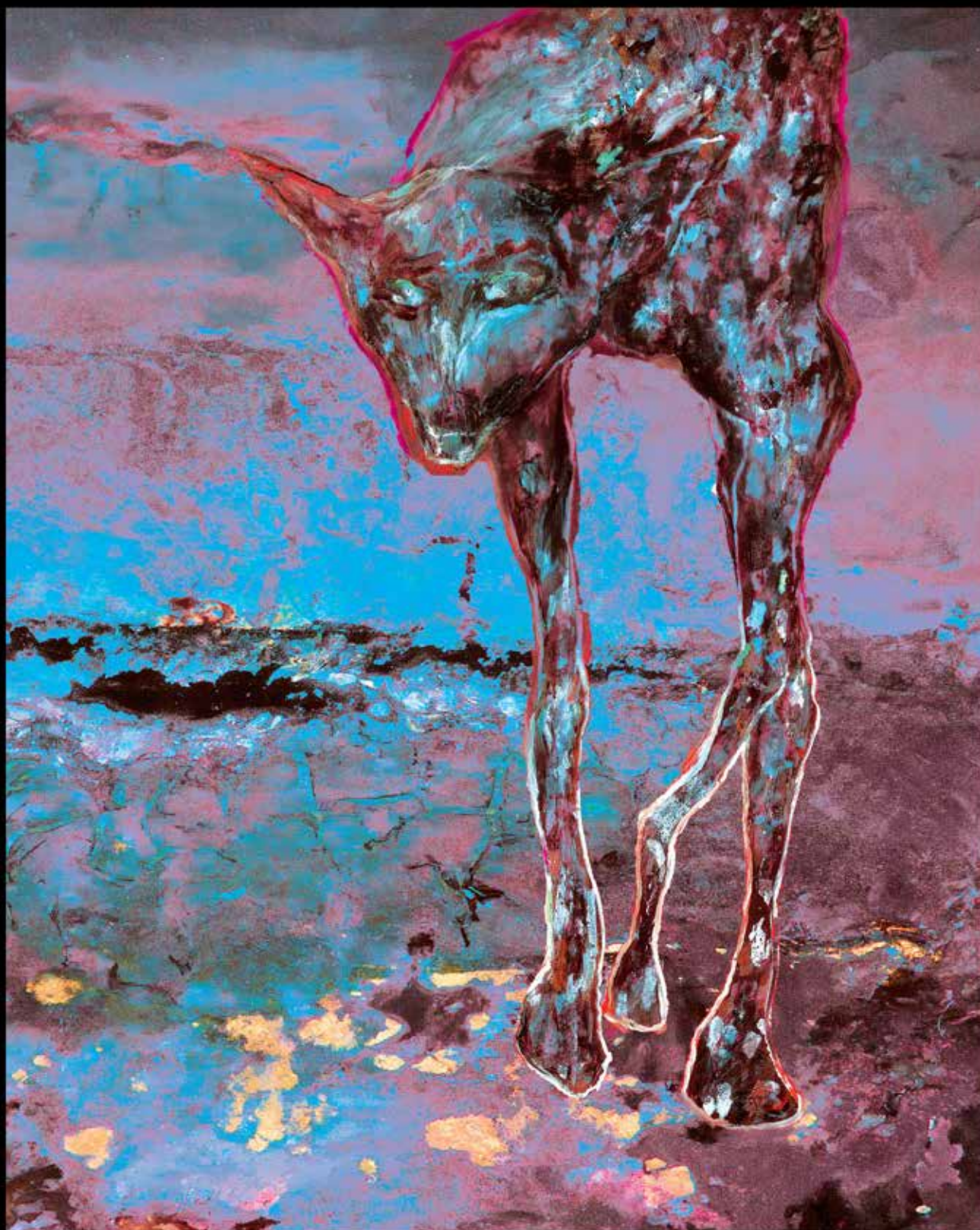


DESERT WILD DOG - BLUE

CATALOGUE NUMBER : M23

L - 1200 x 960mm • M - 1000 x 800mm • S - 800 x 639mm

*Alternative sizes available on request



PINK DESERT WILD DOG

CATALOGUE NUMBER : M34

L - 1200 x 960mm • M - 1000 x 800mm • S - 800 x 640mm

*Alternative sizes available on request



GOLD BUTTERFLY

CATALOGUE NUMBER : M55

L - 1200 x 1200mm • M - 1000 x 1000mm • S - 800 x 800mm

*Alternative sizes available on request



BUTTERFLIES - AQUAMARINE

CATALOGUE NUMBER : M62

L - 1200 x 1200mm • M - 1000 x 1000mm • S - 800 x 800mm

*Alternative sizes available on request



IN FLIGHT COBALT BLUE

CATALOGUE NUMBER : M52

L - 133000 x 1200mm • M - 1200 x 1080mm • S - 1000 x 900mm • XS - 800 x 720mm

*Alternative sizes available on request



IN FLIGHT PURPLE

CATALOGUE NUMBER : M51

L - 1330 x 1200mm • M - 1200 x 1080mm • S - 1000 x 900mm • XS - 800 x 720mm

*Alternative sizes available on request



BUTTERFLIES - PURPLE

CATALOGUE NUMBER : M61

L - 1200 x 1200mm • M - 1000 x 1000mm • S - 800 x 800mm

*Alternative sizes available on request



GOLD NUDE

CATALOGUE NUMBER : M08

L - 1200 x 1000mm • M - 1000 x 833mm • S - 800 x 666mm

*Alternative sizes available on request



CRYSTAL NUDE

CATALOGUE NUMBER : A33

L - 1400 x 1000mm • M - 1200 x 871mm • S - 1000 x 726mm • XS - 850 x 617mm

*Alternative sizes available on request



RED SHOE

CATALOGUE NUMBER : M15

L - 1400 x 1190mm • M - 1200 x 1020mm • S - 1000 x 850mm • XS - 800 x 680mm

*Alternative sizes available on request



FEMALE FORM

CATALOGUE NUMBER : M10

L - 1400 x 525mm • M - 1200 x 450mm • S - 1000 x 375 mm • XS - 800 x 300mm

*Alternative sizes available on request



ORANGE FISH
CATALOGUE NUMBER : M70

L - 1200 x 1200mm • M - 1000 x 1000mm • S - 800 x 800mm

*Alternative sizes available on request



BLUE FISH

CATALOGUE NUMBER : M69

L - 1200 x 1200mm • M - 1000 x 1000mm • S - 800 x 800mm

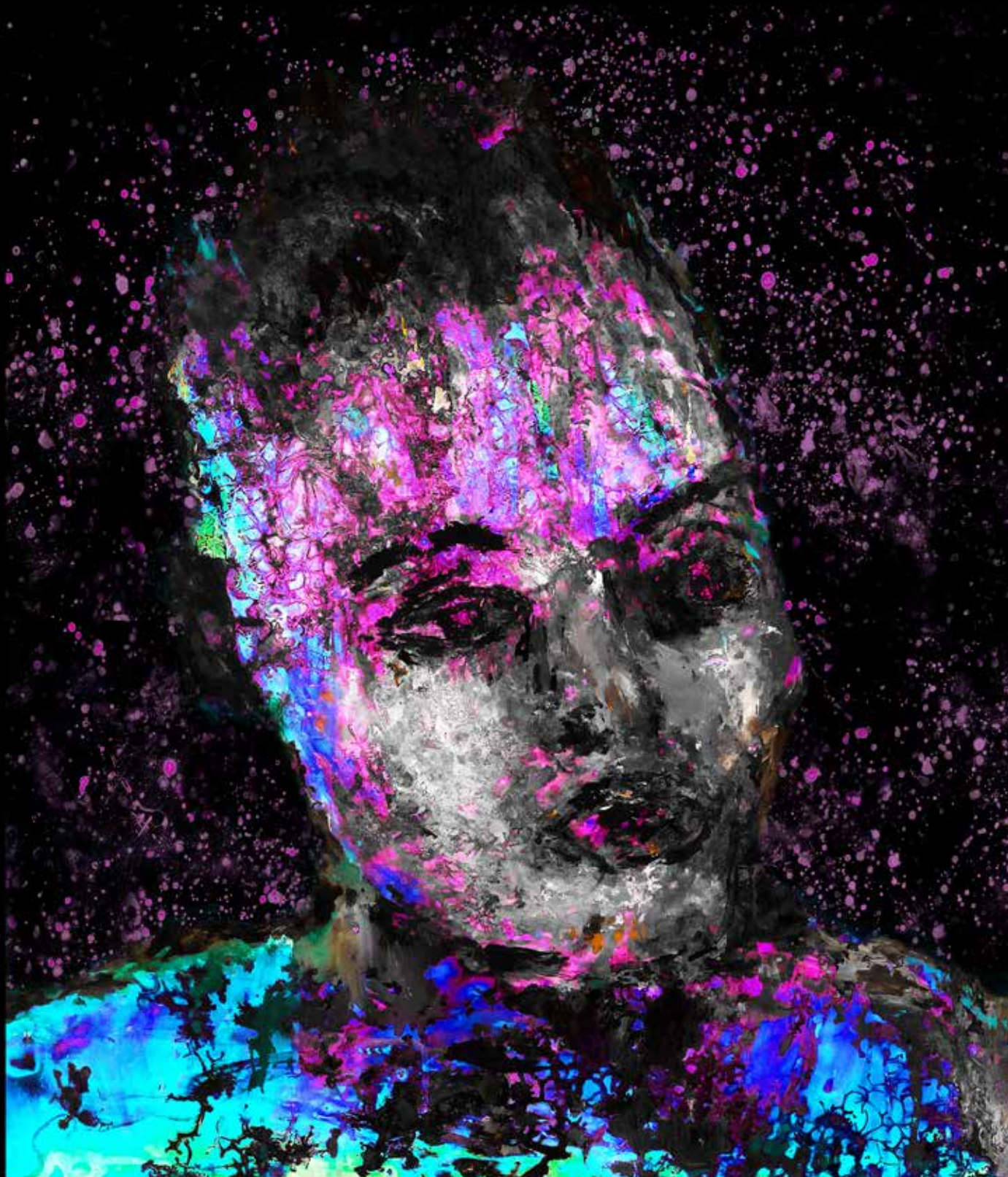
*Alternative sizes available on request



RED & BLUE FISH
CATALOGUE NUMBER : M71

L - 1200 x 1200mm • M - 1000 x 1000mm • S - 800 x 800mm

*Alternative sizes available on request



PORTRAIT MAGENTA

CATALOGUE NUMBER : M59

L - 850 x 728mm • M - 650 x 557mm

*Alternative sizes available on request



ALIEN HEAD

CATALOGUE NUMBER : A34

L - 1400 x 1166mm • M - 1200 x 1000mm • S - 1000 x 833mm • XS - 850 x 708mm

*Alternative sizes available on request



PORTRAIT RED

CATALOGUE NUMBER : M07

L - 1200 x 937mm • M - 1000 x 781mm • S - 800 x 625mm

*Alternative sizes available on request



CRYSTAL FACE

CATALOGUE NUMBER : M56

L - 1500 x 1163mm • M - 1200 x 930mm • S - 1000 x 775mm • XS - 800 x 620mm

*Alternative sizes available on request



THE GOLD TREE
CATALOGUE NUMBER : M44

L - 1500 x 1000mm • M - 1200 x 797mm • S - 1000 x 664mm • XS - 800 x 531mm

*Alternative sizes available on request



NIGHT TREE

CATALOGUE NUMBER : A37

L - 1439 x 1200mm • M - 1200 x 1000mm • S - 1000 x 833mm • XS - 800 x 666mm

*Alternative sizes available on request



BLUE CRYSTAL TREE
CATALOGUE NUMBER : M46

L - 1400 x 900mm • M - 1200 x 770mm • S - 1000 x 642mm • XS - 800 x 514mm

*Alternative sizes available on request



RED TREE

CATALOGUE NUMBER : M09

L - 1400 x 1167mm • M - 1200 x 1000mm • S - 1000 x 833mm • XS - 800 x 666mm

*Alternative sizes available on request



BRONZE CRYSTAL TREE

CATALOGUE NUMBER : M47

L - 1400 x 900mm • M - 1200 x 770mm • S - 1000 x 642mm • XS - 800 x 514mm

*Alternative sizes available on request

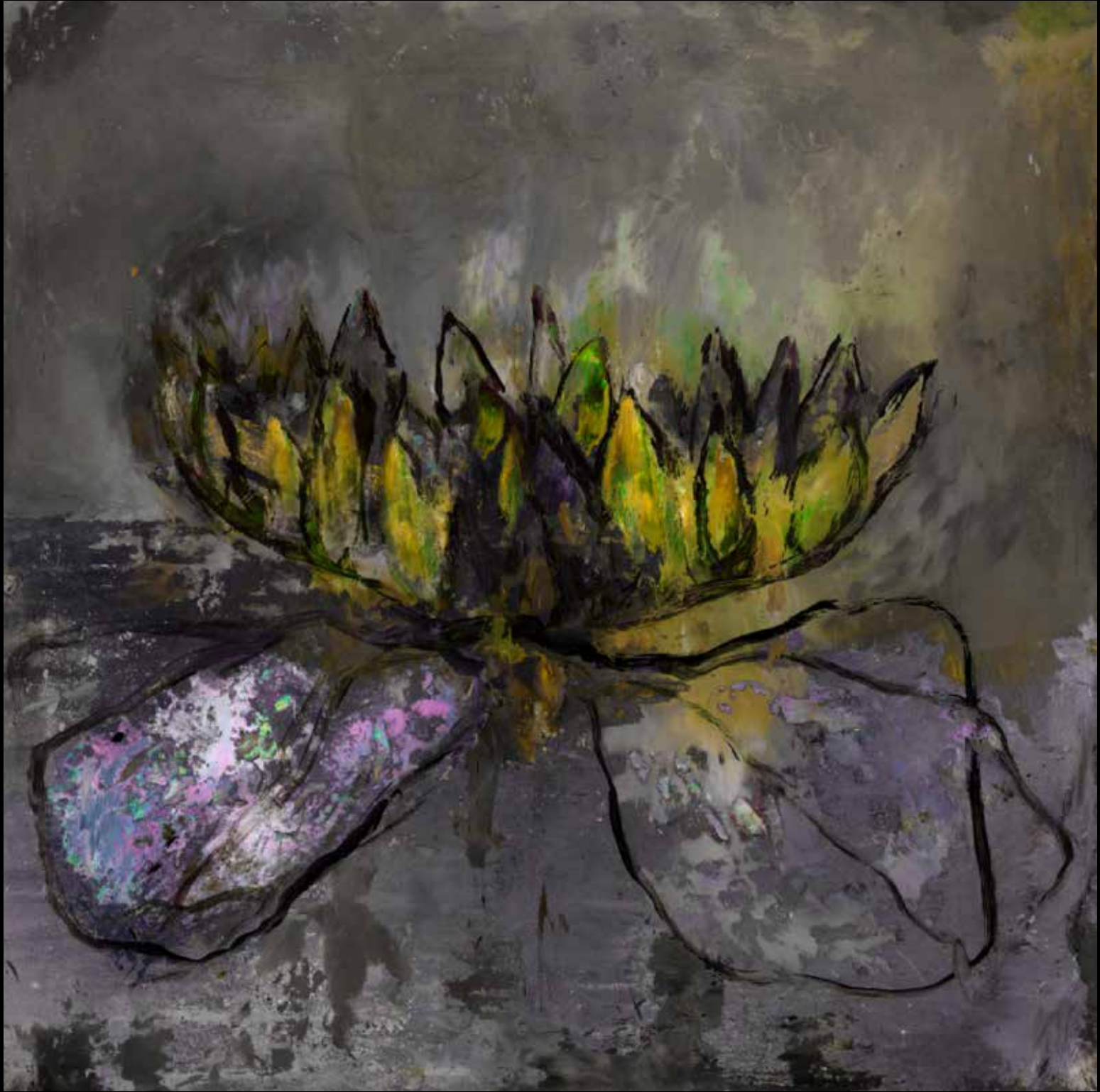


PURPLE TREE

CATALOGUE NUMBER : M68

L - 1400 x 974mm • M - 1200 x 834mm • S - 1000 x 696mm • XS - 800 x 556mm

*Alternative sizes available on request

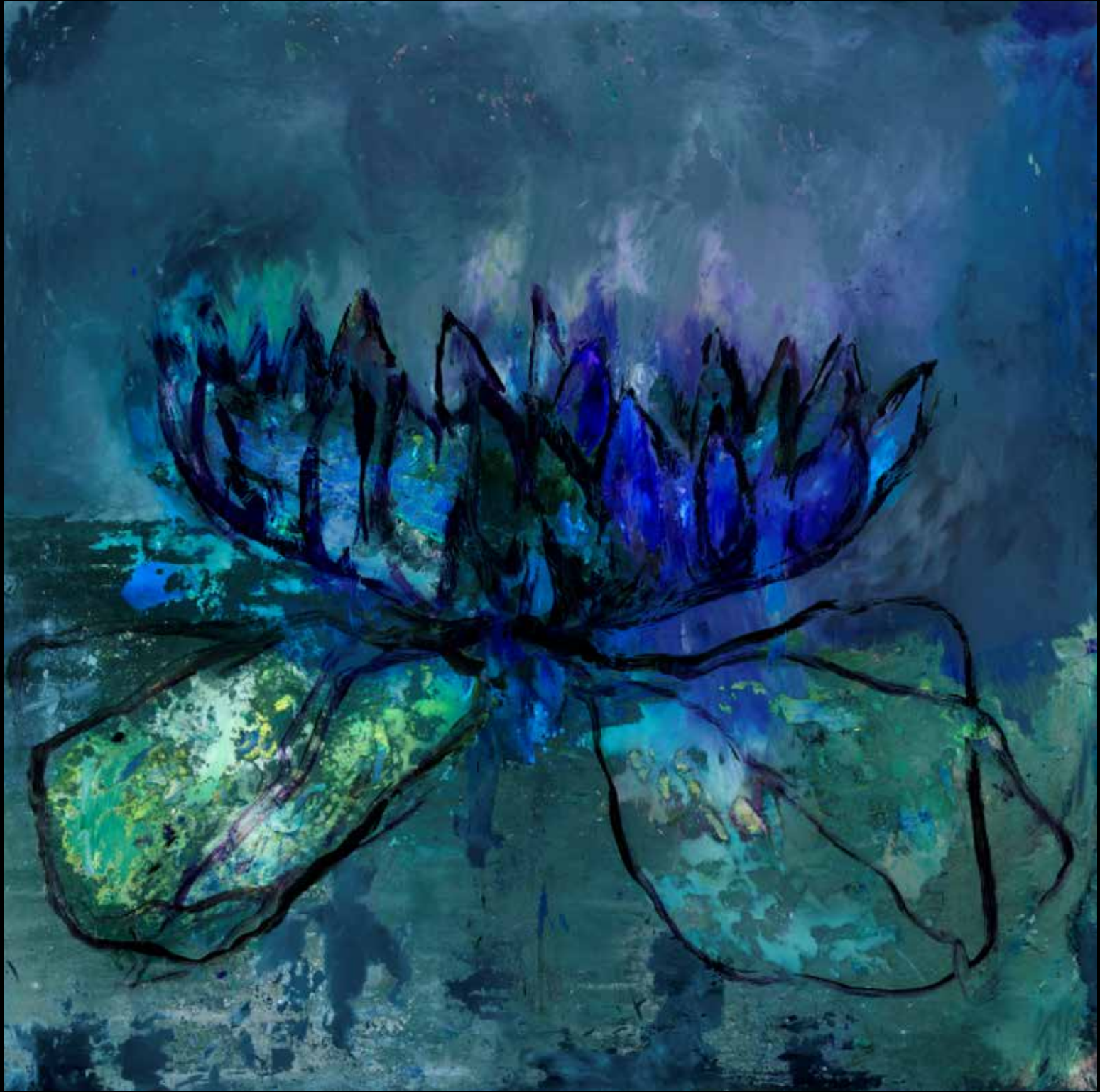


GOLDEN LILY

CATALOGUE NUMBER : M72

L - 1200 x 1200mm • M - 1000 x 1000mm • S - 850 x 850mm

*Alternative sizes available on request



ELECTRIC BLUE LILY
CATALOGUE NUMBER : M73

L - 1200 x 1200mm • M - 1000 x 1000mm • S - 850 x 850mm

*Alternative sizes available on request



CRYSTAL GREEN LILY
CATALOGUE NUMBER : M74

L - 1200 x 1200mm • M - 1000 x 1000mm • S - 850 x 850mm

*Alternative sizes available on request

GAIL CATLIN

1983: Accepted for Master's Degree at Royal College of Art London

National and International competitions:

- 1979: Cape town Biennial – South African National Gallery
- 1981: South African Day Republic Day festival – Durban
- 1981: First Cape Town triennial – South African National Gallery
- 1985: Women Artist of South Africa – South African National Gallery
- 1989: South African women paper Exhibition
- 1990: Standard Bank Natinal Drawing Competition
- 1991: Grand Prix International art Plastiques – Nice France – Award winner of landscape category
- 1993: Momentum Art – Biennial – South Africa
- 1994: Grand Prix International art Plastiques – Nice France – Award winner
- 1998: Art beyond Borders – RathausAugsberg – Germany, represented South Africa, a travelling exhibition
- 1999: One woman solo show – South African Embassy London
- 1999: Solo Show – Osborne studio – London
- 2000: Exhibited on many group shows. Installed sculpture, conceptual and installations in various public spaces
- 2008: Solo Exhibition Joao Ferreira Gallery, Cape Town
- 2009: One Woman exhibition – Dubai
- 2010: University Kaust - Kaust Museum Middle East - 2 liquid crystal installations

Public Collections:

- Pulitzer Collection, St Louis, USA
- Royal College of Art, London, UK
- South African National Gallery, Cape Town, RSA
- Johannesburg Art Gallery, RSA
- Pretoria Art Museum, RSA
- Durban Art Gallery, RSA
- Polokwane Art Museum, RSA
- Stellenbosch University Collection, RSA
- South African Reserve Bank Collection, RSA
- South African Reserve Bank, Pretoria, RSA
- South African Department of Education and Training, Pretoria, RSA
- Public Library Collection, Cape Town, RSA
- Good Hope Bank of South Africa, Cape Town, RSA
- Constitutional Court, Pretoria, RSA
- Denarco European Art Foundation, Edinburgh, UK
- Kaust Science Museum, Thuwal, Saudi Arabia
- 2014 Benneton Art Foundation collection, Italy
- 2019 Oppenheimer Collection
- 2019 Ellerman House Collection

PRINTING

Silver based C-type (chromogenic colour) prints are produced by exposing specialised, light-sensitive photographic paper to red, green & blue light. The paper is then developed and washed, using traditional photographic techniques to produce an archival print.

Fujicolor Crystal Archive Digital Pearl is a high gloss silver halide paper which has a slight metallic appearance. This pearl finish gives an iridescent 3 - dimensional feel to images printed on it, making deep blacks and vibrant colour reproductions achievable.

DIASEC

Diasec® is a patented archival method of face-mounting the image side of a print to transparent acrylic glass, while the back of the print is mounted onto Dibond®. Sandwiched between the acrylic glass and Dibond®, the print is perfectly flat with a high-gloss finish.

FRAME

All artworks are finished with a Black Aluminium Frame and a hanging mechanism which is attached to the Dibond® backing.